



*"We bring the world home to you"*

[www.gtconline.com](http://www.gtconline.com)

Internet - \$17.95 per Month

Teacher and Church Discounts Available

**First Month FREE**

**No Setup Fee!!!**

3 FREE Email Addresses (\$1.00 per month additional email)

10 MB Web Space

Free Technical Support

Easy Setup

P.O. Box 235 (mailing)

202 West Fourth Avenue (physical)

Glenwood, GA 30428

912.523.5111

NEW OFFICE HOURS:

MONDAY – FRIDAY 8 AM – 6 PM

***After hours technical support : 1- 800- 352 – 8156***

***www.24hoursupport.com***

***helpdesk@24hoursupport.com***

Username : \_\_\_\_\_

Password : \_\_\_\_\_

Access number : 523-2200

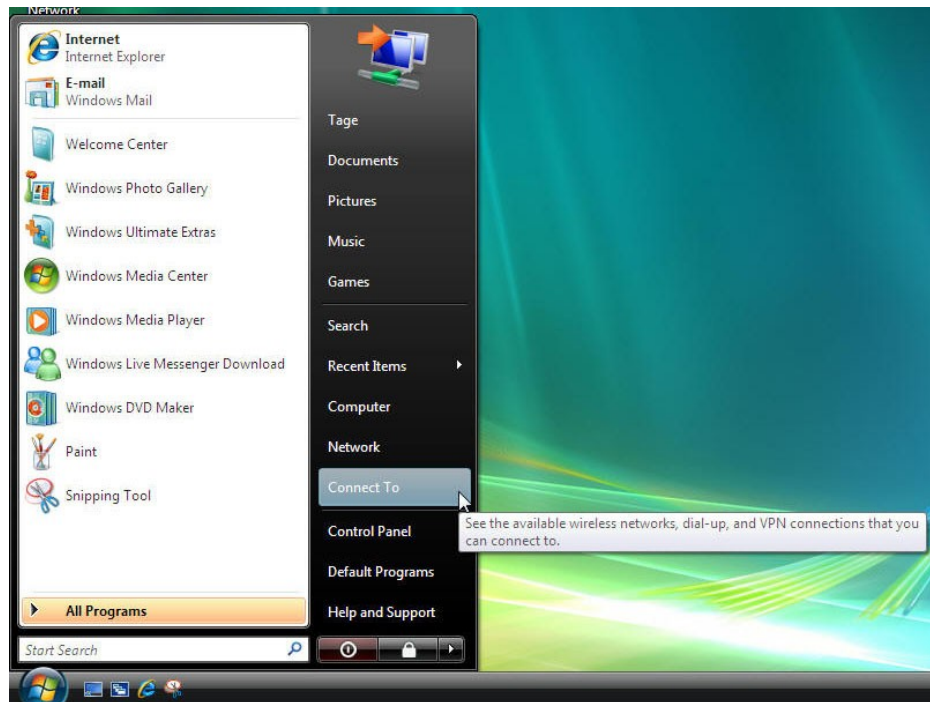
1<sup>st</sup> Email : \_\_\_\_\_@gtconline.com

2<sup>nd</sup> Email : \_\_\_\_\_@gtconline.com

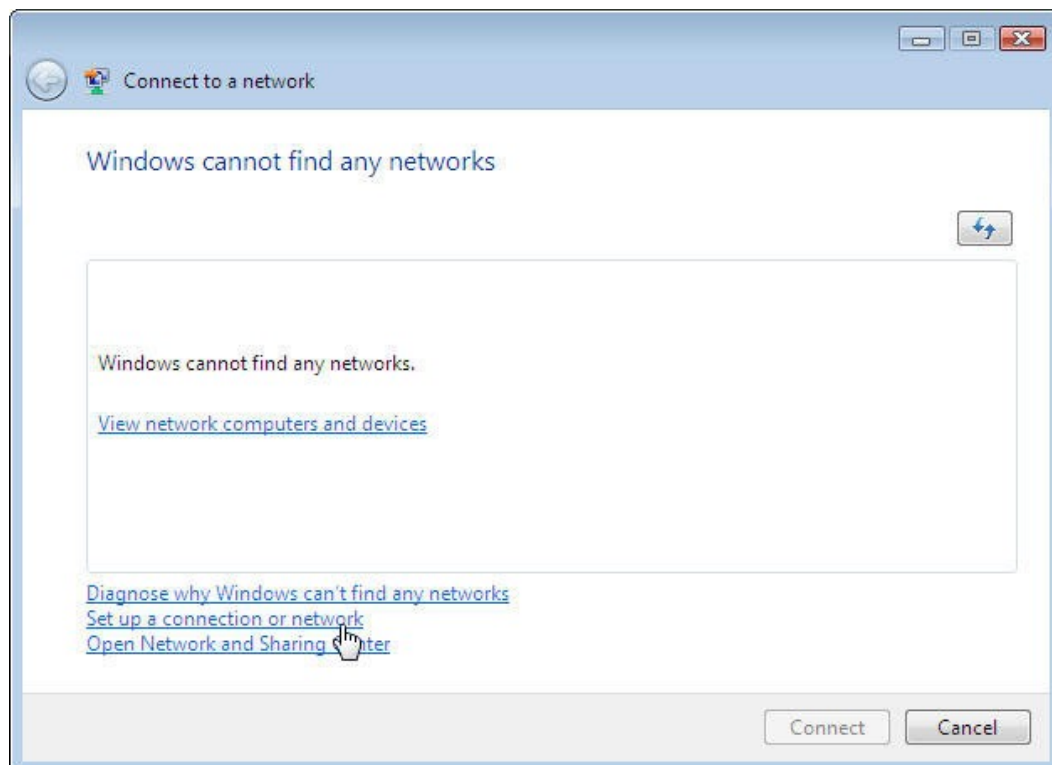
3<sup>rd</sup> Email : \_\_\_\_\_@gtconline.com

# Dialup Set up in Windows Vista

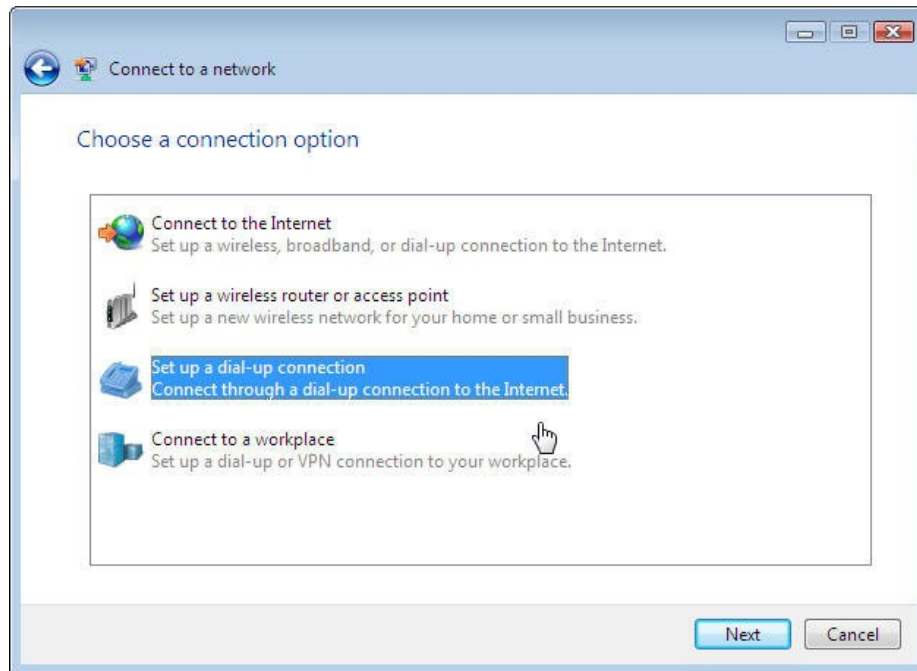
1. Open the Start Menu and select "Connect to."



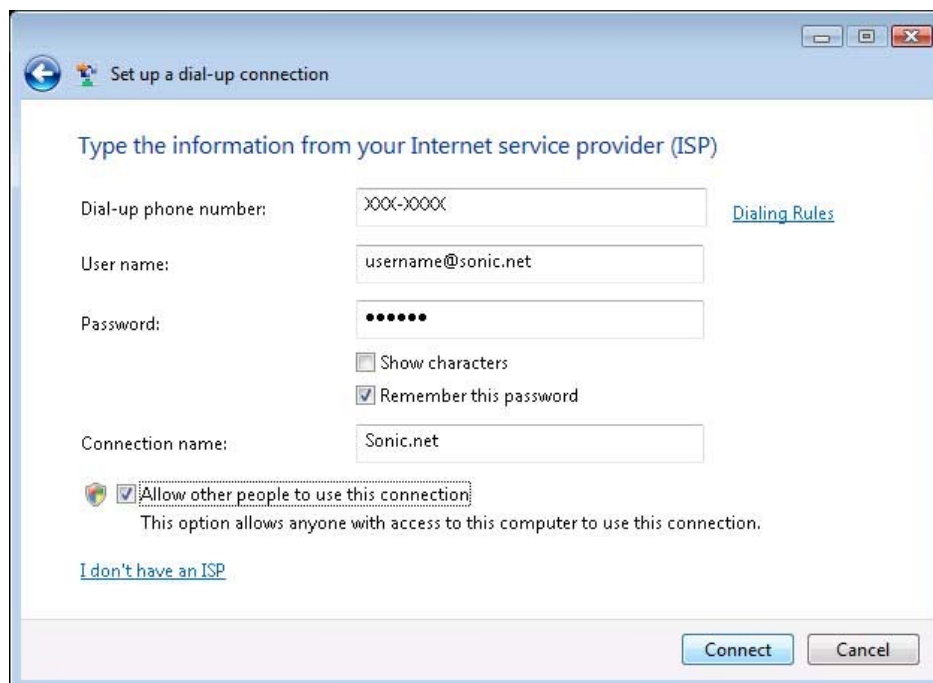
2. Select the option to "Set up a connection or network."



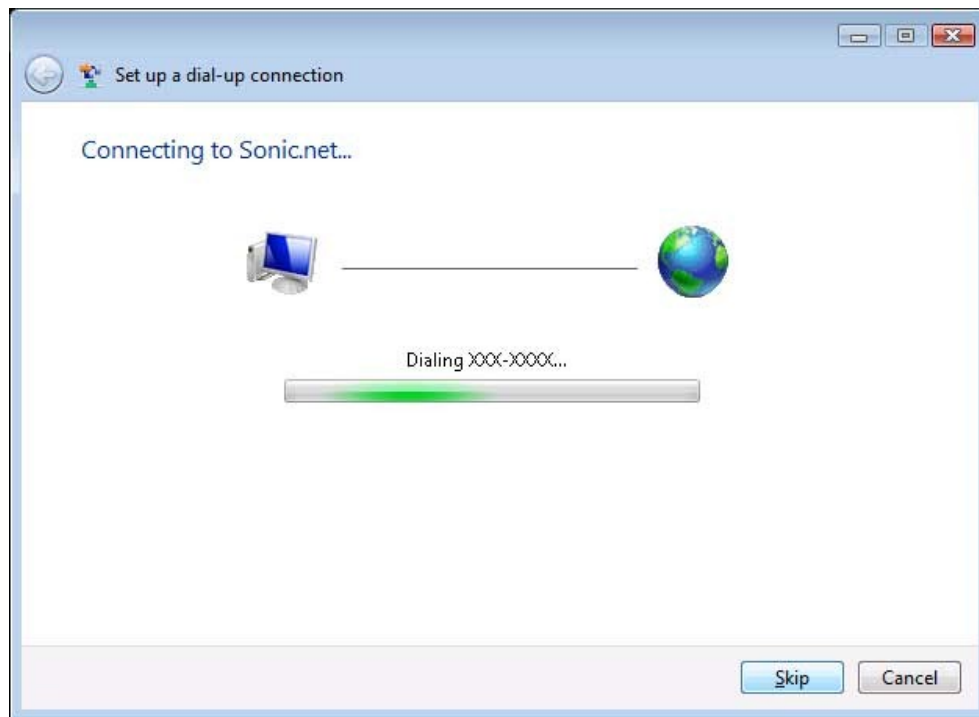
3. Select "Set up a dial-up connection" and click "next."



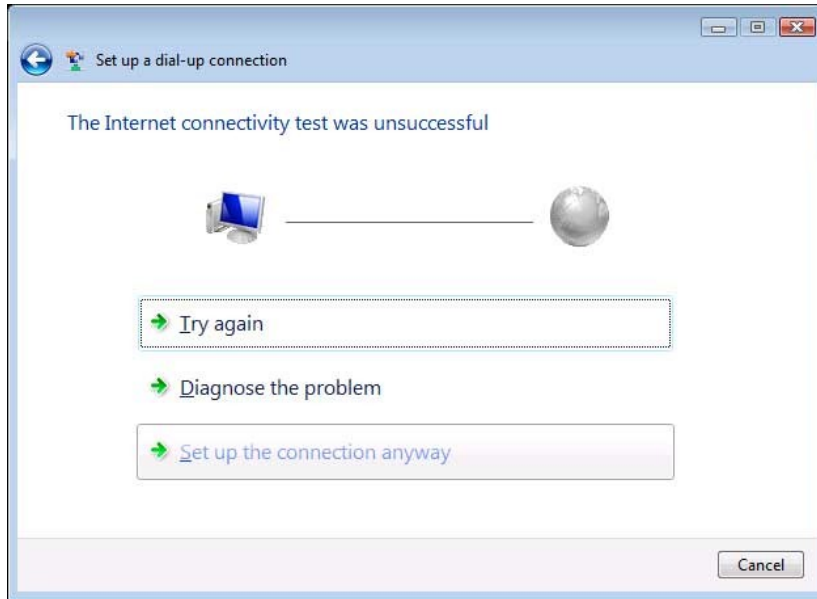
4. Enter your local access number in the field labeled "Dial-up phone number." Enter your gtconline.com user name in the box labeled "User name" and your gtconline.com password in the box labeled "Password." Once you have entered all that information, select the "Connect" button.



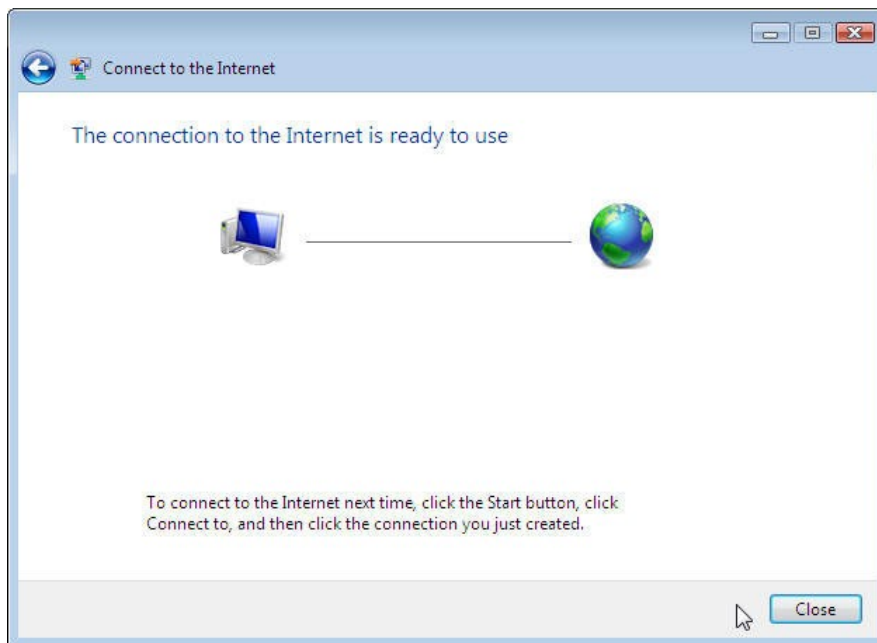
5. Windows will now attempt to use your new dialup connection before saving your work. If you would like to interrupt this process and save, click the button labeled "Skip" below.



6. If you skipped the initial connection attempt, or your attempt to connect otherwise failed, you will be presented with three options:
  - Try Again. This will simply instruct your computer to re-try the connection.
  - Diagnose the problem. If you did not intentionally interrupt the connection attempt, this may be a good option. Dialup diagnostics are beyond the scope of this document.
  - Set up the connection anyway. If you intentionally skipped the test connection, this is probably the option you were intending to use.



7. Once your connection has been successfully created, you will get the following screen. Select the "close" button.



8. To connect to the internet, click the Start Button, select "Connect to," and then select the connection that you just created.