



"We bring the world home to you"
www.gtconline.com

Internet - \$17.95 per Month
Teacher and Church Discounts Available

First Month FREE
No Setup Fee!!!

3 FREE Email Addresses (\$1.00 per month additional email)
10 MB Web Space
Free Technical Support
Easy Setup

P.O. Box 235 (mailing)
202 West Fourth Avenue (physical)
Glenwood, GA 30428
912.523.5111

NEW OFFICE HOURS:
MONDAY – FRIDAY 8 AM – 6 PM

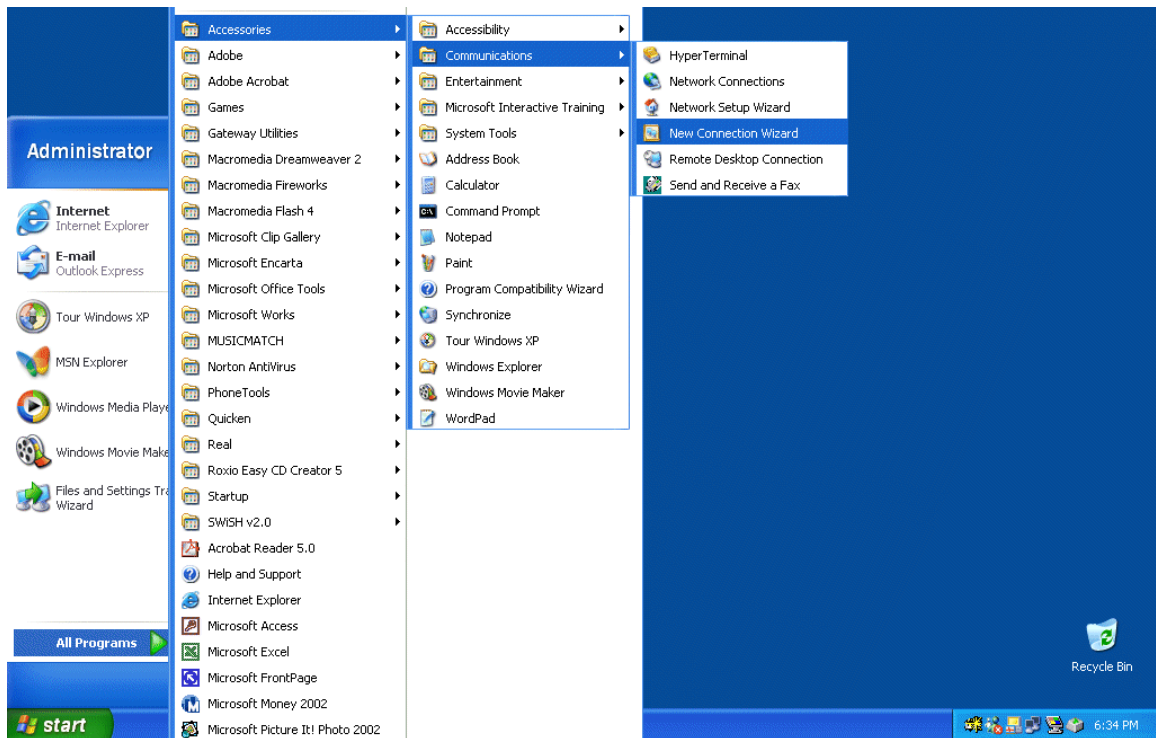
technical support : 1- 800- 352 – 8156
www.24hoursupport.com
helpdesk@24hoursupport.com

Username : _____
Password : _____
Access number : _____

1st Email : _____@gtconline.com
2nd Email : _____@gtconline.com
3rd Email : _____@gtconline.com

Setting Up your Dial-up.

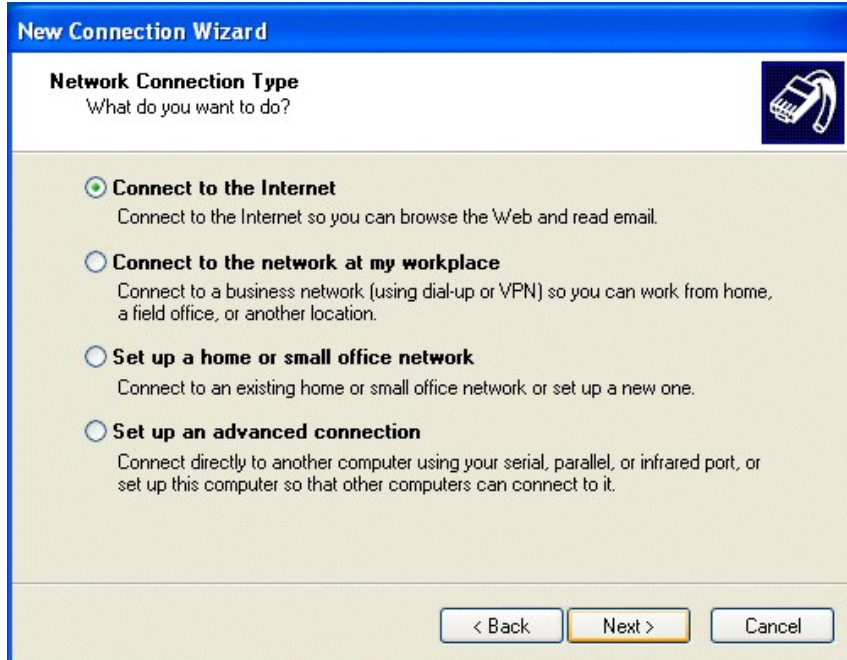
1. Click on Start, then on All Programs, then on Accessories, then on Communications, then on New Connection Wizard.



2. Click on Next to begin the New Connection Wizard.



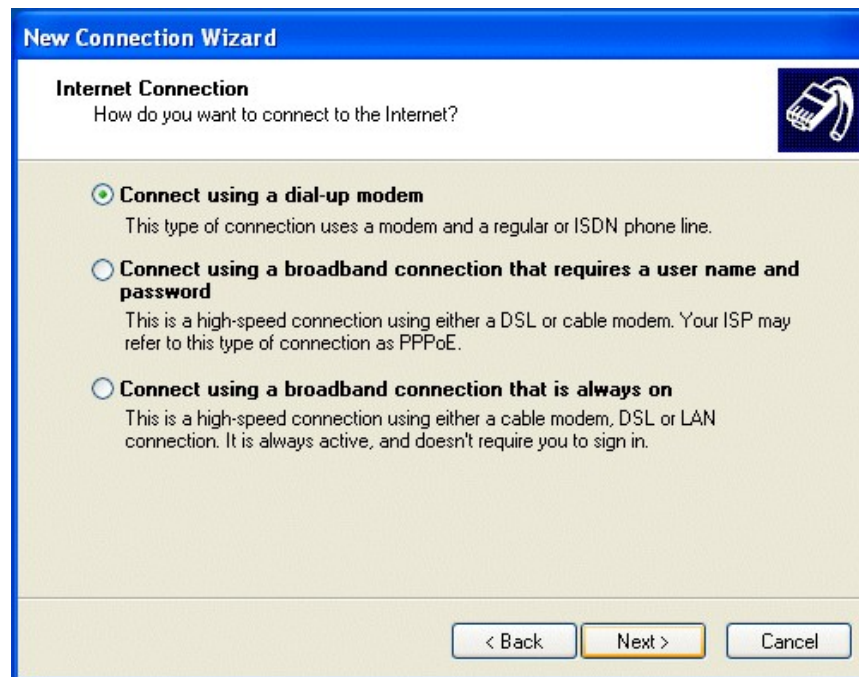
3. Make sure the green dot is on Connect to the Internet and click on Next.



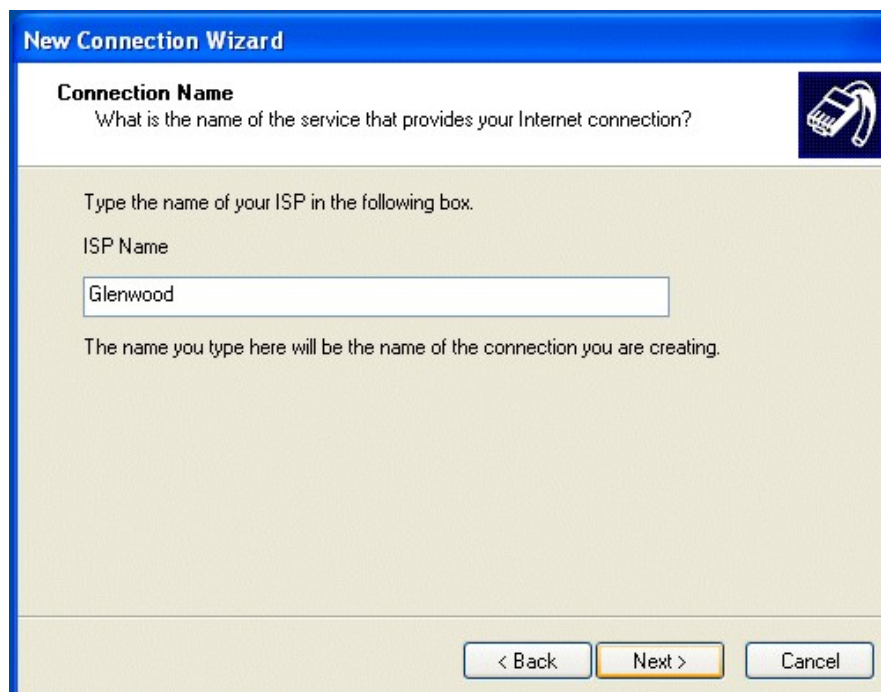
4. Click one time on Setup My Connection Manually. Click on Next.




5. Make sure the green dot is on Connect using a Dial-up Modem and then click on Next.



6. In the blank that says Type in the name of your ISP in the following box, type in Glenwood. Click on Next.



7. Type in the local dialup number for your area in the phone number field. Afterwards click on Next.



New Connection Wizard

Phone Number to Dial
What is your ISP's phone number?

Type the phone number below.

Phone number:
523-2200

You might need to include a "1" or the area code, or both. If you are not sure you need the extra numbers, dial the phone number on your telephone. If you hear a modem sound, the number dialed is correct.

< Back Next > Cancel

8. Where it says Username, type in your Username. Where it says Password type in your password. Confirm your password by typing in your password a second time in the Confirm Password blank. Click on Next.



New Connection Wizard

Internet Account Information
You will need an account name and password to sign in to your Internet account.

Type an ISP account name and password, then write down this information and store it in a safe place. (If you have forgotten an existing account name or password, contact your ISP.)

User name: your username here

Password: ●●●●●●

Confirm password: ●●●●●●

Use this account name and password when anyone connects to the Internet from this computer

Make this the default Internet connection

Turn on Internet Connection Firewall for this connection

< Back Next > Cancel

9. Click one time on the box that says Add a Shortcut to this Connection to My Desktop. Then click on Finish.

